

SIEMENS

NXPLUS C

**SF₆-Insulated, Metal-Enclosed and
Metal-Clad Medium-Voltage
Switchgear**



Technical Description

PROFIX

PROFIX NXPLUS C

The software PROFIX NXPLUS C was developed as an engineering tool with the objective to put a single-line diagram, a front view and the associated constructional data at the disposal of the user within a short time.

The diagrams can be generated directly in PowerPoint or as a Windows graph via a graph generator. The graph generator offers the possibility to save the diagrams in a neutral data format by means of the "Export" function. The formats EMF (Enhanced Windows Metafile) and DXF (AutoCad) are offered. With these neutral data formats, the diagrams can be edited subsequently with other IT programs.

The tool is available for all groups dealing with gas-insulated switchgear engineering, e.g. customers, engineering offices, design institutes, universities and others. Accordingly, the PROFIX tool can be downloaded from the Internet page of Siemens AG. The Internet address is:

<http://www.siemens.com/profix/en>

For Siemens employees, there is another download available on the Intranet.

The address is:

https://intranet.wss02.ptd.siemens.de/content/M-Products/nxplusc/default_de.aspx

The PROFIX tool is available under "Configuration/Tools".

At the moment, the tool offers engineering and diagram output in the following languages:

German	French
English	Portuguese
Chinese	Italian
Russian	Czech
Spanish	Polish

If you need another language, please contact PTD M2 PM in Erlangen or your support at the head office.

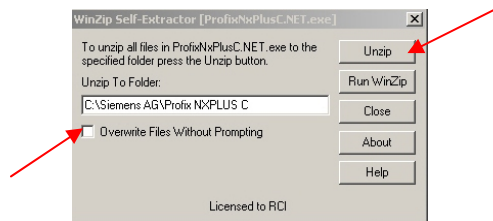
NXPLUS C switchgear is configured via the corresponding screen masks of the individual typicals. Their technical features are interlocked against each other to a large extent through the corresponding logical systems, i.e. a technically unfeasible configuration cannot be planned in PROFIX.

Just the current and voltage transformers are configured without interlocking. Here, the user can enter his specifications for the transformer freely without having them checked for physical feasibility. At this point it is advisable to clarify the feasibility of transformers with the Switchgear Factory in Frankfurt.

Installation

A complete version or an update are installed with the same installation file, which can be downloaded from the INTRANET or INTERNET (addresses see above) and saved on the local drive c:.

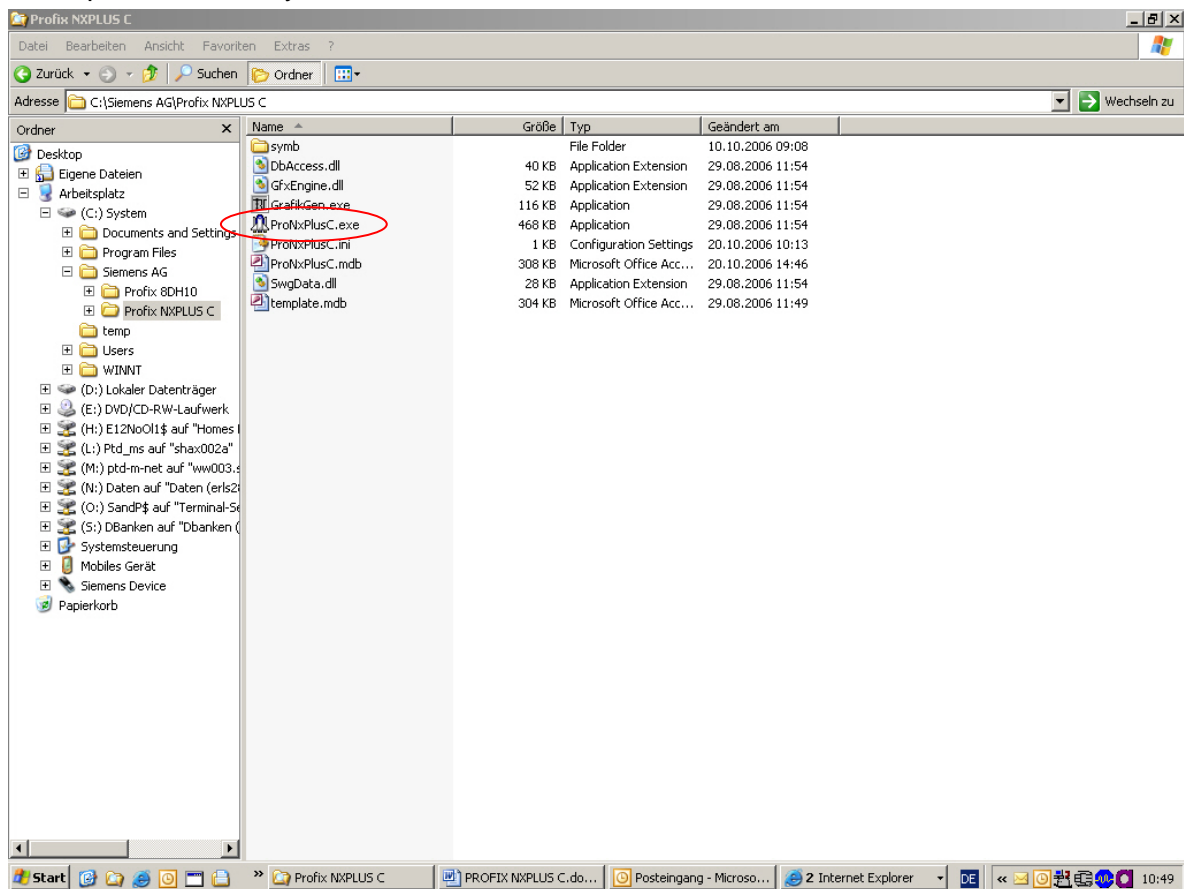
The file .exe contained in the ZIP-file is then started with a double-click. The following window appears:



The installation can be started with a click on the field "Unzip". In case of an update, several files are overwritten. The acknowledgement of each single file can be avoided by setting an checkmark in "Overwrite Files without Prompting".

After successful installation, please confirm with "OK":

The program PROFIX is started with a double-click on the start file "ProNxPlusC.exe" with the "Space-Shuttle" symbol.



Possible problems

To get PROFIX working, the software "Microsoft .NET-Framework 2.0" must be installed on the computer.

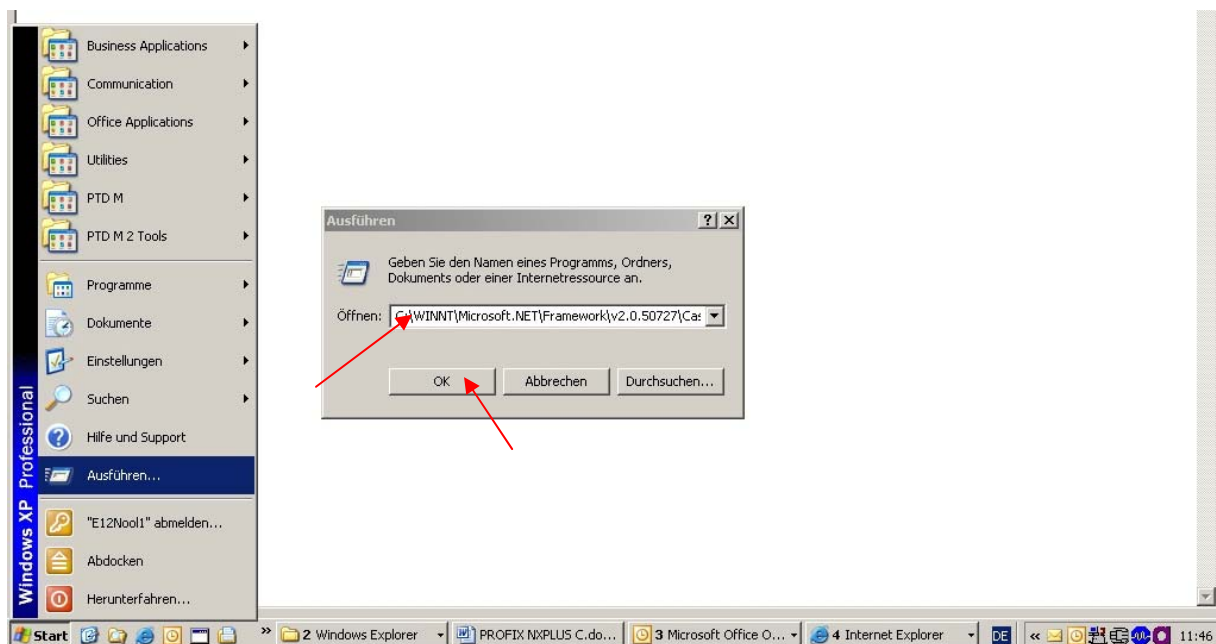
Please check if the directory "C:\WINDOWS\Microsoft.NET\Framework\v2.0..." is available on the computer. If not, the software can be downloaded from the Internet free of charge and installed. The associated link is:

<http://www.microsoft.com/downloads/details.aspx?FamilyID=0856eacb-4362-4b0d-8edd-aab15c5e04f5&displaylang=en>

If PROFIX shall be saved on a system drive and started from there, the following command must be executed on the local PC PROFIX shall run on:

`C:\WINNT\Microsoft.NET\Framework\v2.0.50727\CasPol.exe -machine -q -cg LocalIntranet_Zone FullTrust`

Please copy this command line and insert it in the application "Run".



Then please click on "OK".